



# Redesign of the Arborway: Kelley Circle to Murray Circle

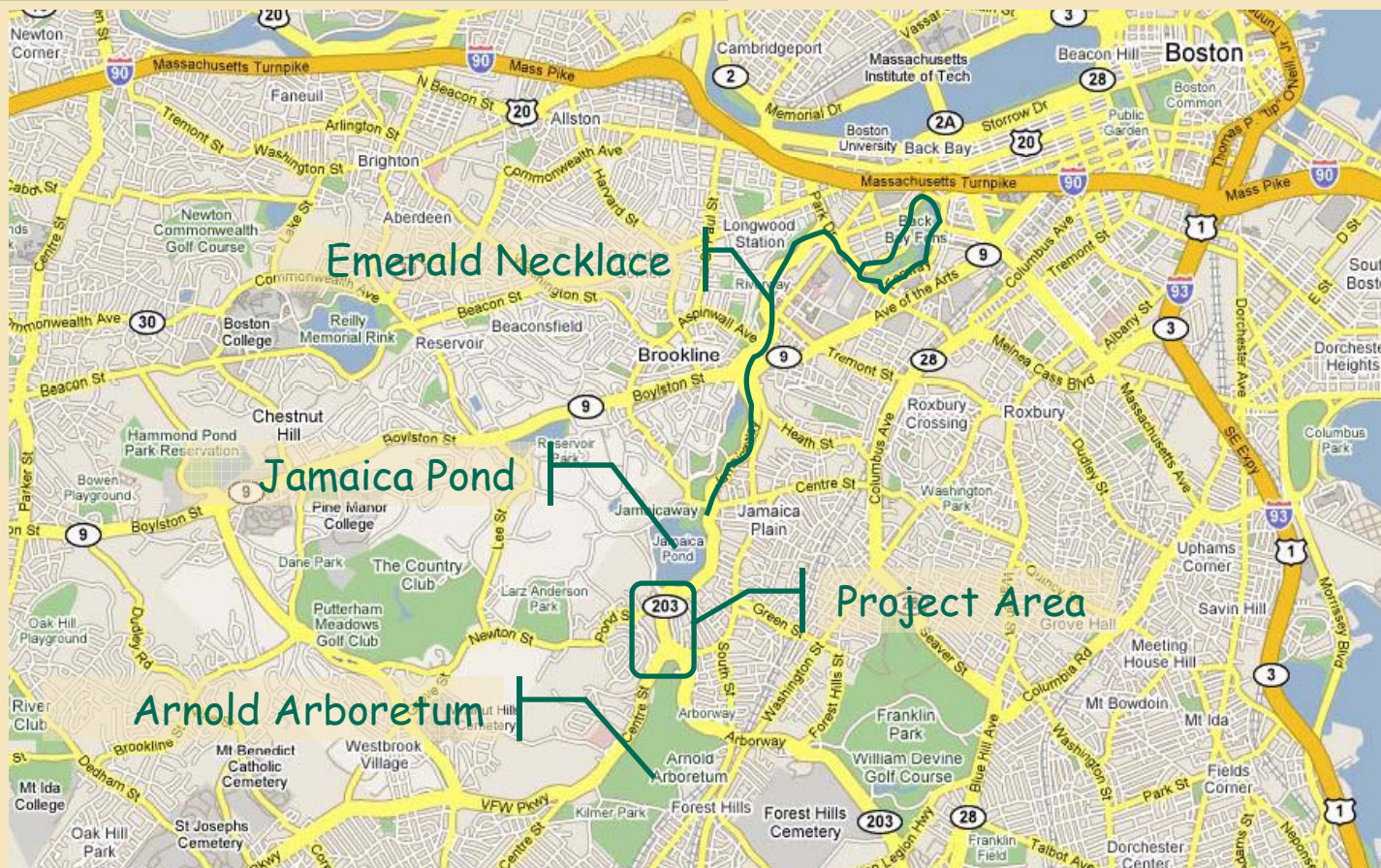
Design By: HUB Engineering, Inc.

Michelle Boccia  
Joseph Mayotte

Andrew Caparco  
Jocelyn Rothstein



# Existing Conditions:





# Existing Conditions:



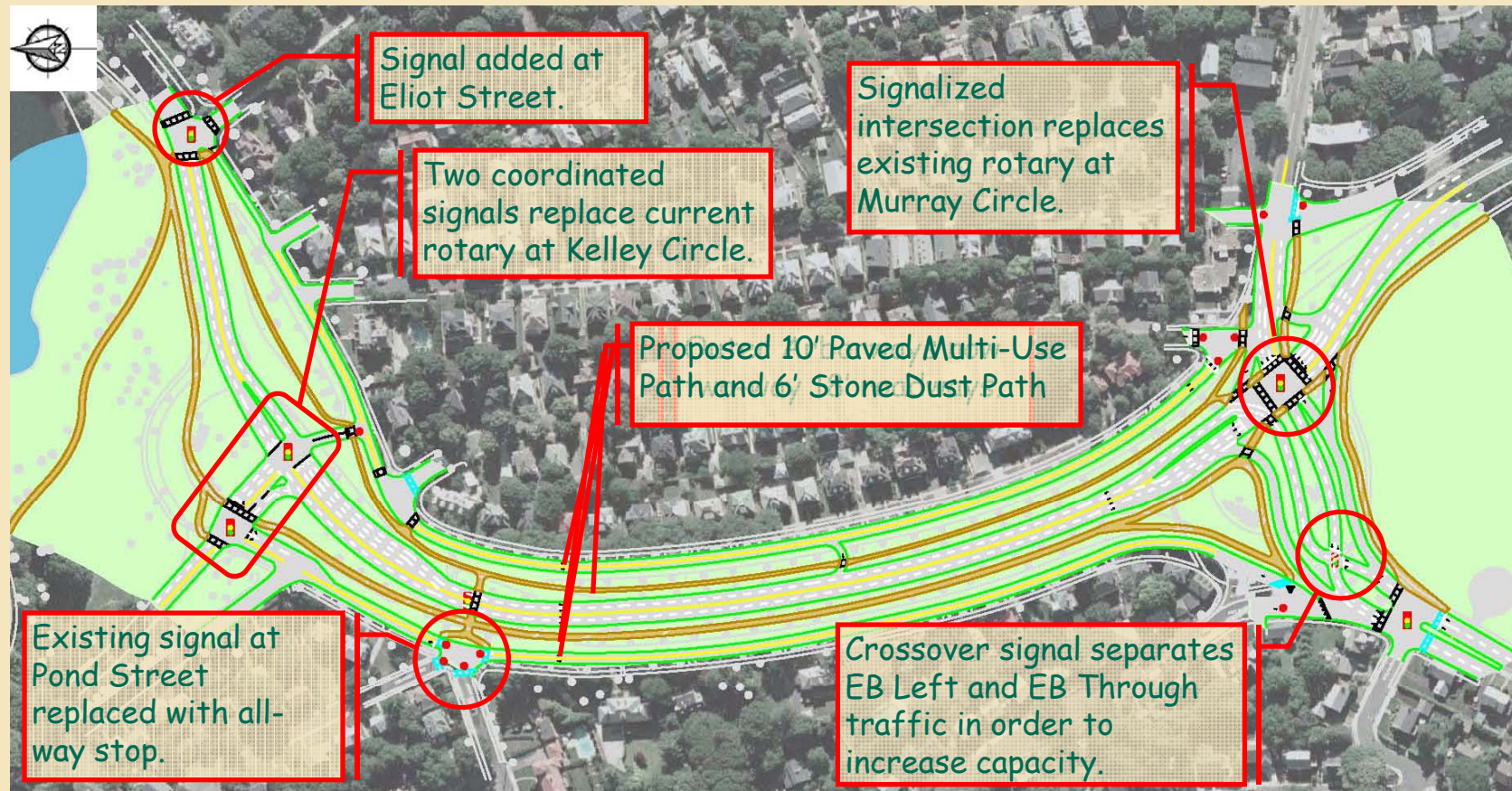


## Objectives:

- Provide a high quality multi-use path.
- Provide safe pedestrian crossings.
- Separate regional and local traffic.
- Provide reasonable access to and from local streets while discouraging cut-thru traffic.
- Maintain arterial capacity.
- Convert road space to green space.
- Convert inaccessible green space to accessible green space.
- Preserve existing landscape and mature trees.

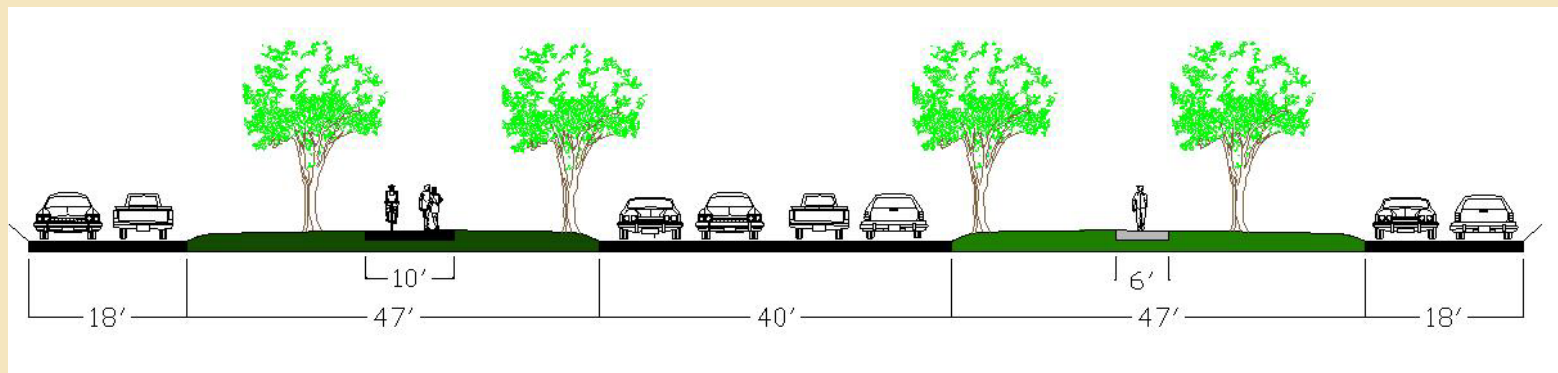
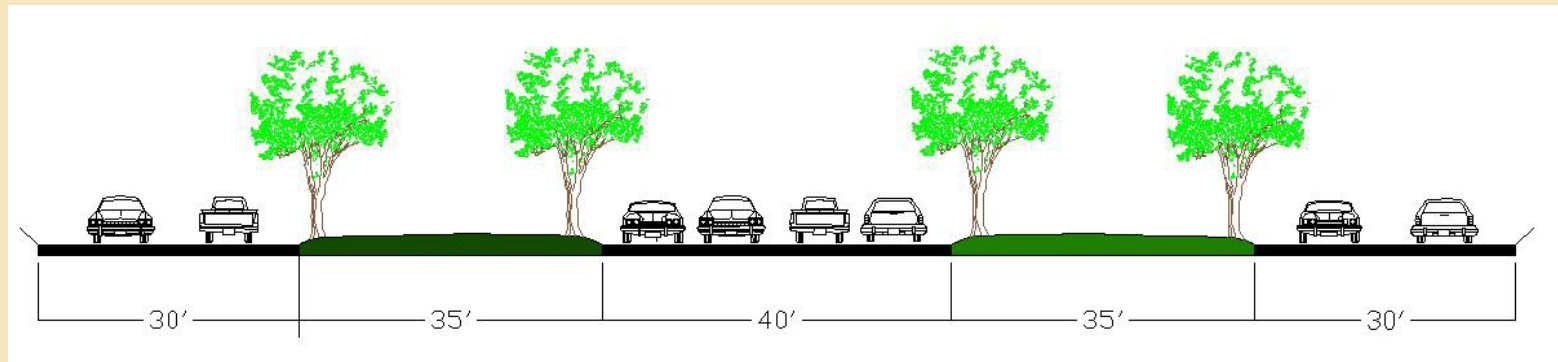


# Northeastern Proposed Design:





# Paths:



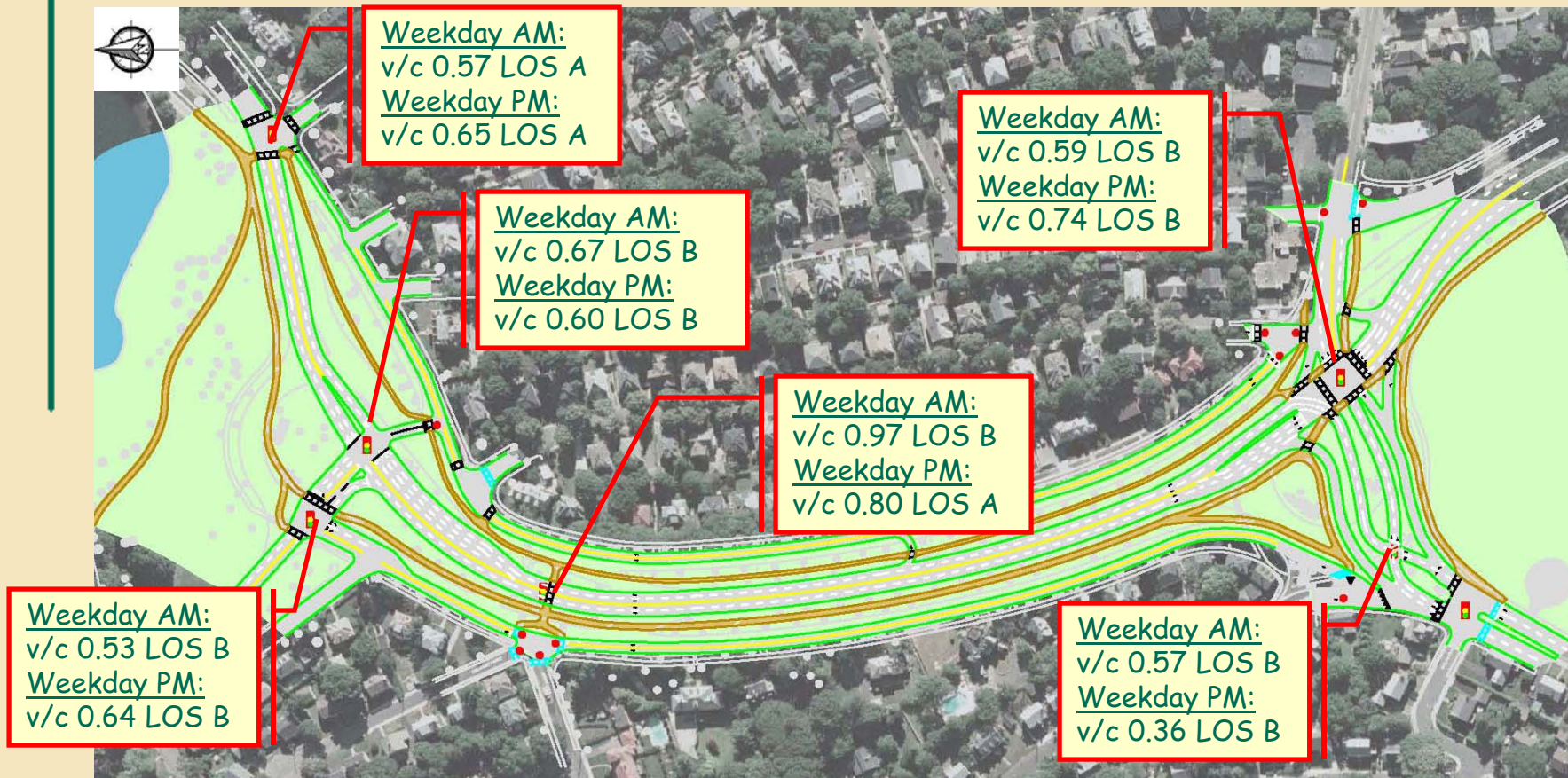


# Origin-Destination Study:

---



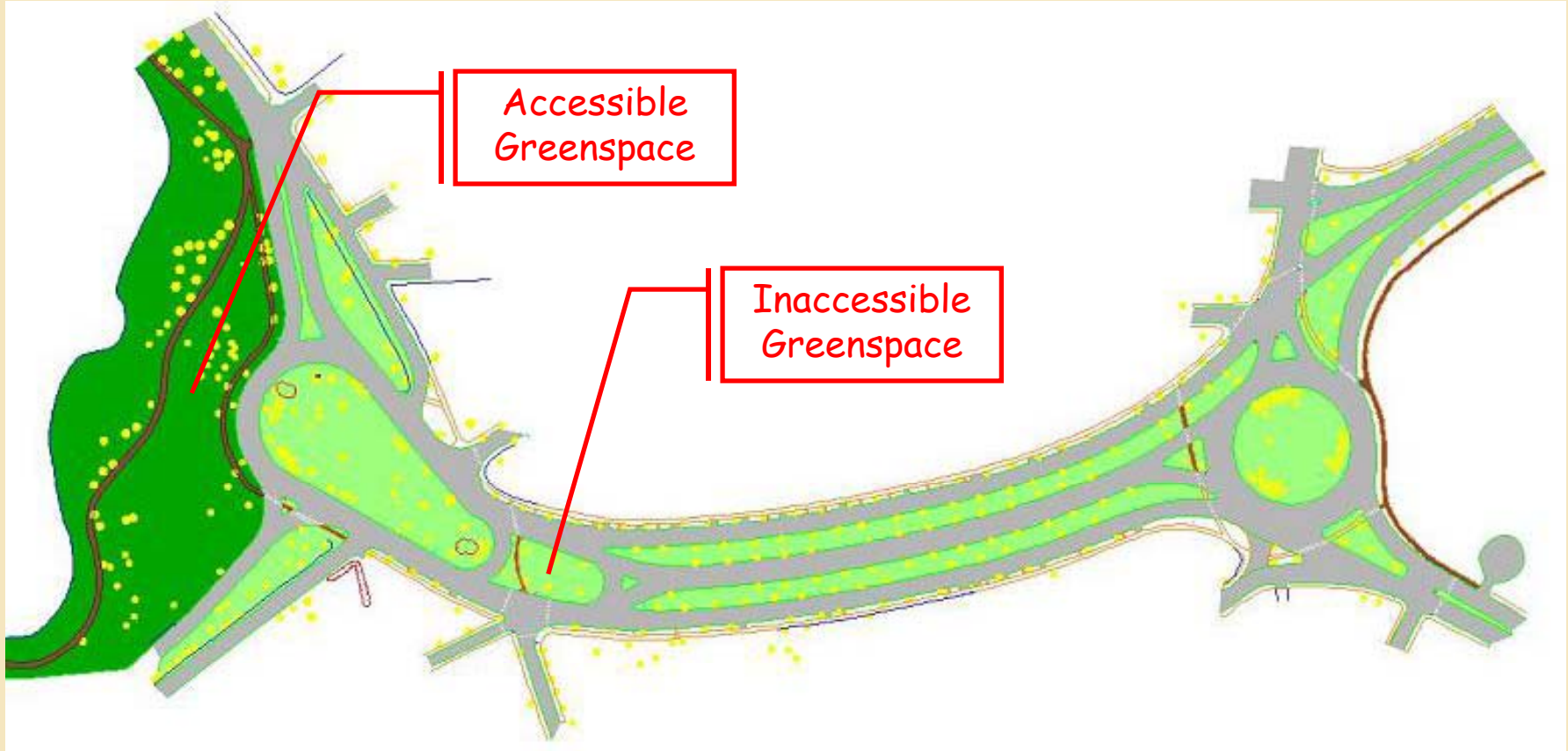
# Analysis of Proposed Improvements





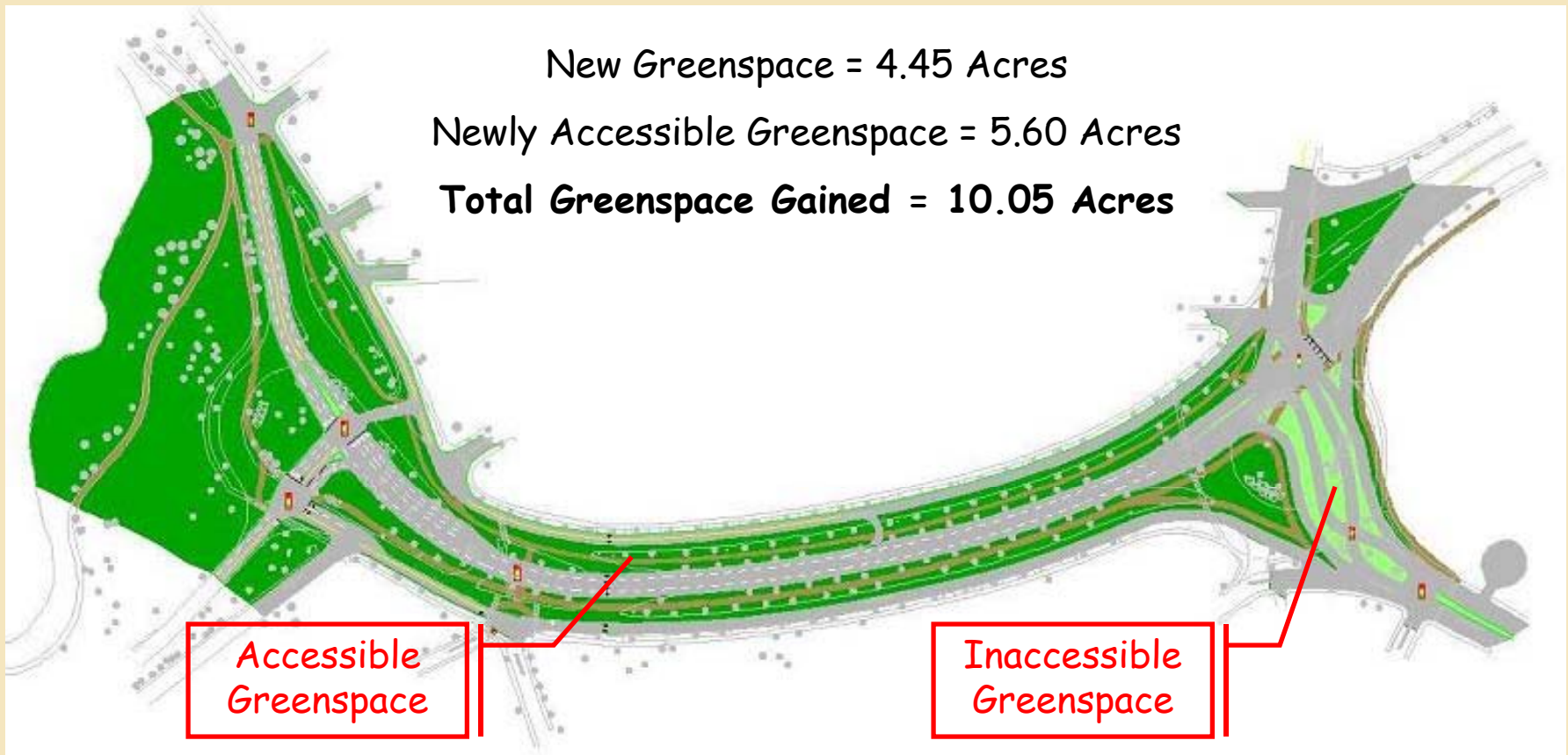


# Existing Recreational Greenspace:





# Proposed Recreational Greenspace:







## Evaluation:

- Design provides a 10' paved multi-use path as well as a 6' stone dust path.
- All crossings are signal protected.
- Design geometrically separates regional and local traffic.
- Design provides reasonable access to and from local street.
- Design maintains current arterial capacity.
- Design converts road space to green space.
- Design converts inaccessible green space to accessible green space.
- No mature trees along the Arborway disrupted.



# Questions?

