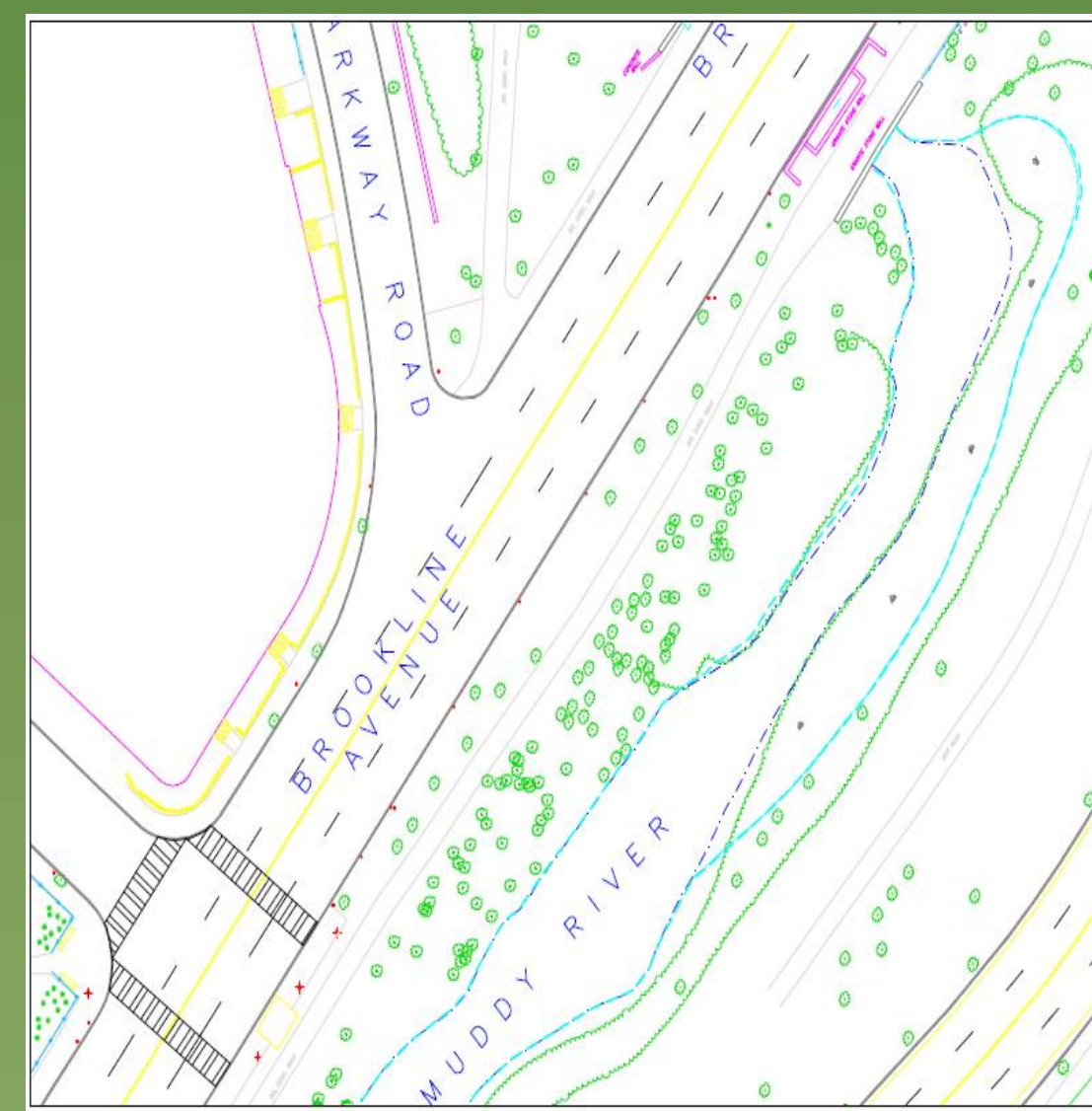


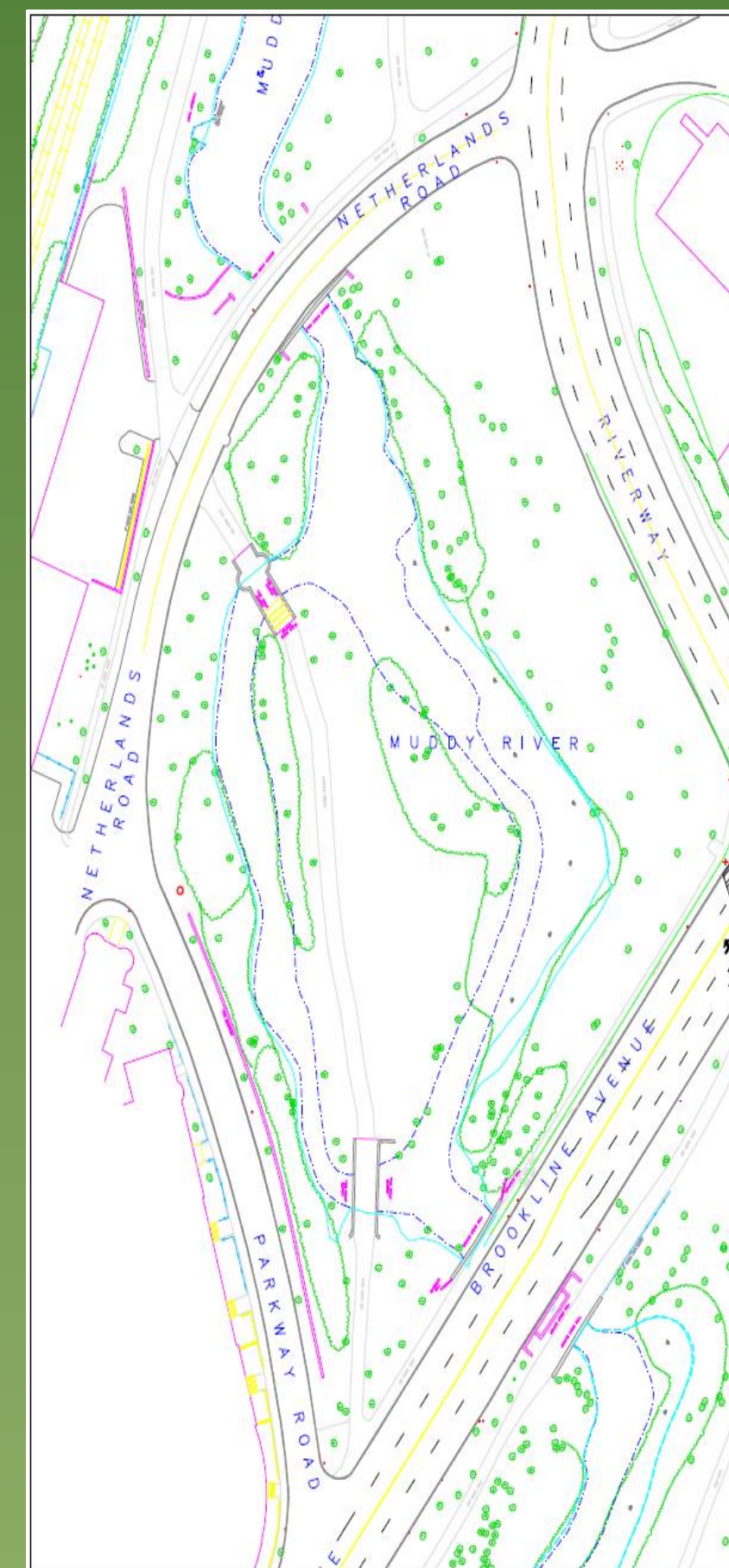
# Brookline Avenue and Route 9 Crossing

Design By: Tony Cennamo, Allison Goulet, Zach Shapiro, and Ryan St. Martin

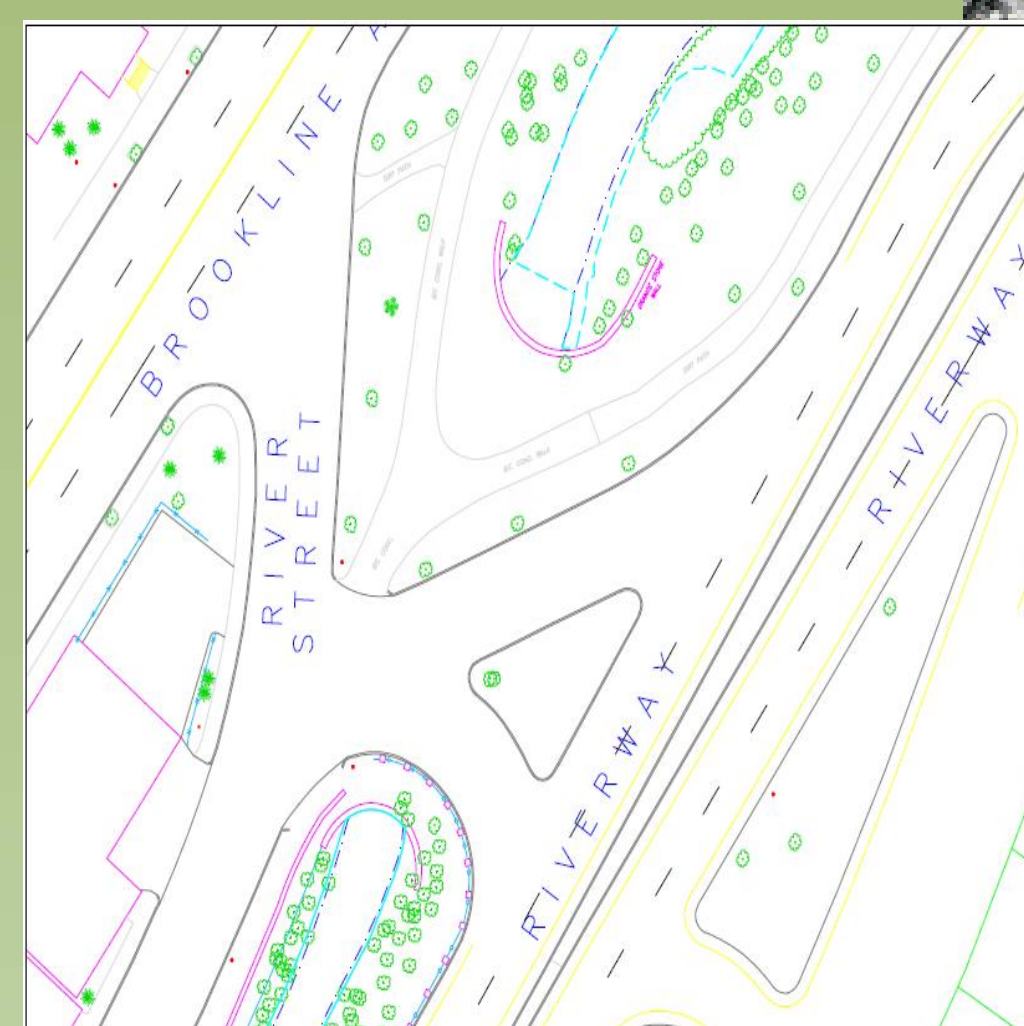
Advisor: Professor Peter Furth



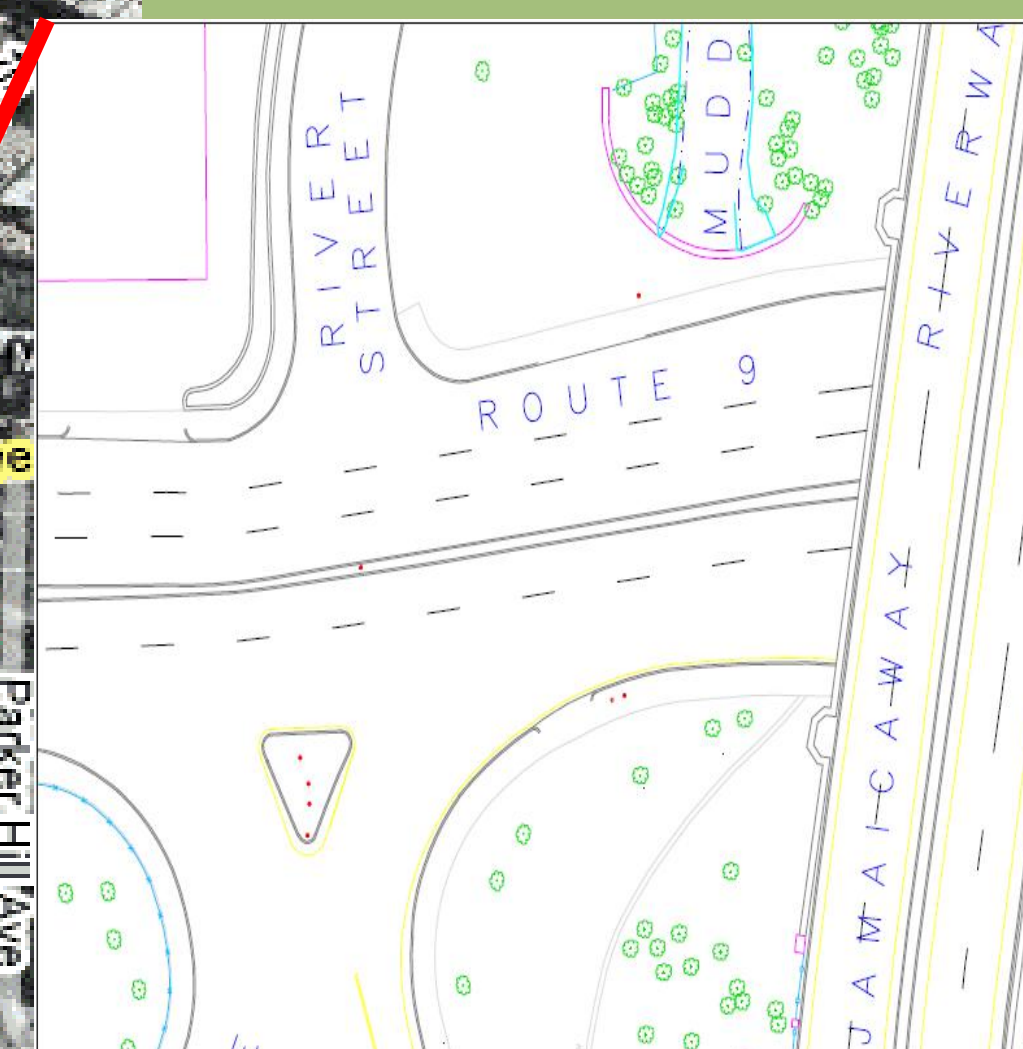
2. The Emerald Necklace Paths have no safe crossing at Brookline Ave.



1. Cut through traffic and underdeveloped paths make crossing this section of park difficult.



3. The paths end at the Riverway off ramp and do not begin again until south of Rt. 9.



4. No safe crossing exists for cyclists and pedestrians to cross Rt. 9.

4